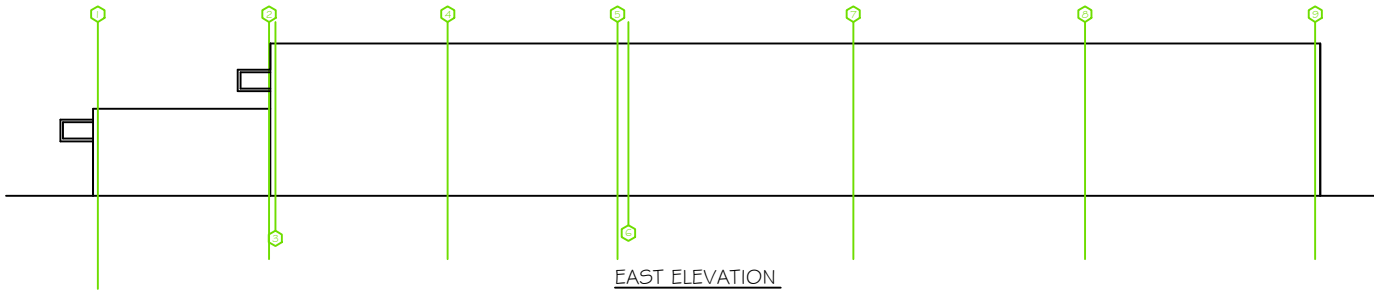


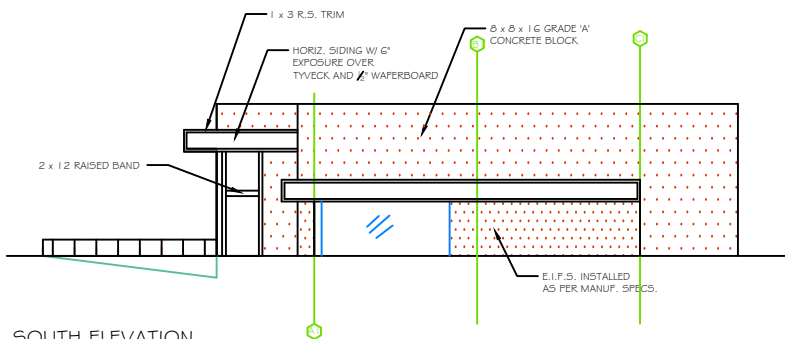
WEST ELEVATION

SCALE: 3/32" = 1'
BY: E.B.



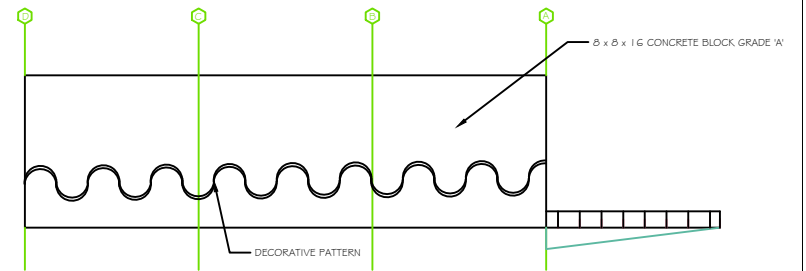
EAST ELEVATION

SCALE: 3/32" = 1'
BY: E.B.



SOUTH ELEVATION

SCALE: 3/32" = 1'
BY: E.B.



NORTH ELEVATION

SCALE: 3/32" = 1'
BY: E.B.