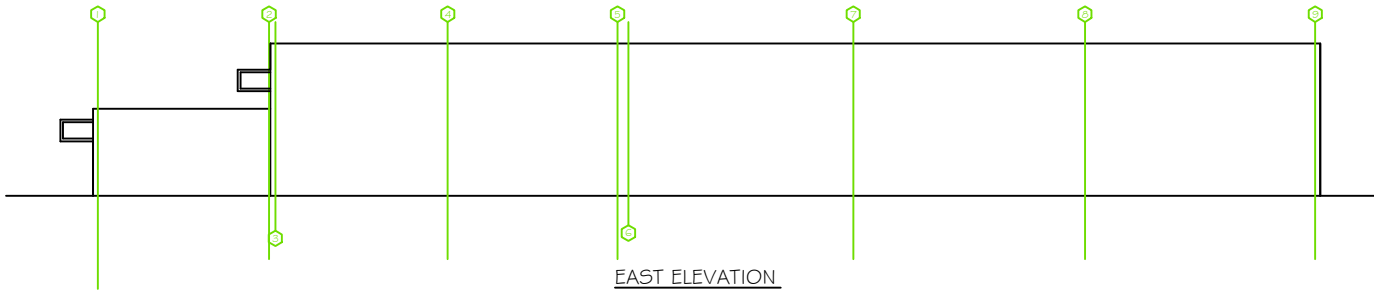


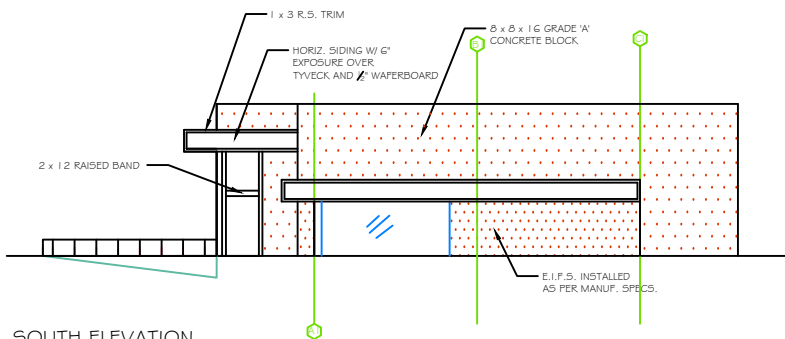
**WEST ELEVATION**

SCALE: 3/32" = 1'  
BY: E.B.



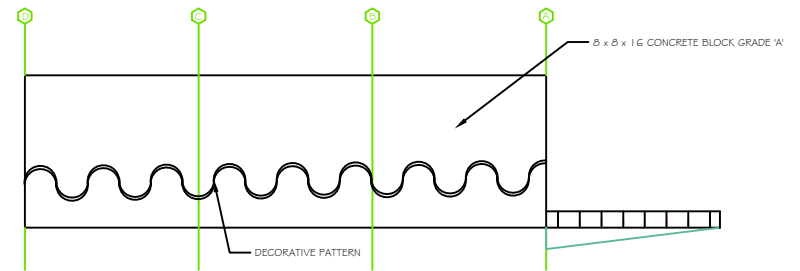
**EAST ELEVATION**

SCALE: 3/32" = 1'  
BY: E.B.



**SOUTH ELEVATION**

SCALE: 3/32" = 1'  
BY: E.B.



**NORTH ELEVATION**

SCALE: 3/32" = 1'  
BY: E.B.